



# DISTRICT WALLPAPER

GWP 3721.116

## COLOR

Alabaster

## CONTENTS

60% Cellulose, 24% Polyester, 12% Mineral Fillers, 4% Binder

## REPEAT HEIGHT

42.18"

## REPEAT WIDTH

26.77"

## PANEL WIDTH

26.77"

## DIRECTION

Up the bolt

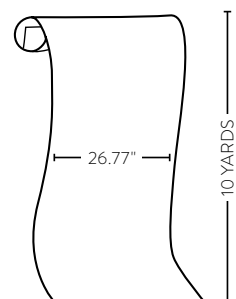
## NOTES

Price by the 5 yard single roll.  
Packaged and sold by the 10 yard double roll.

One roll will cover 33.46 square feet or 3.11 square meters.

This image is for illustrative purposes only. The colors shown are accurate within the constraints of lighting, photography and the color accuracy of your monitor.

## PACKING DIAGRAM





## ADDITIONAL COLORWAYS



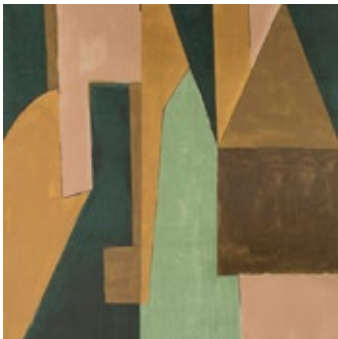
**DISTRICT COBALT**  
GWP 3721.115



**DISTRICT TAWNY**  
GWP 3721.134



**DISTRICT SILT**  
GWP 3721.167



**DISTRICT TOBACCO**  
GWP 3721.376



# HANGING INSTRUCTIONS

## SURFACE PREPARATION

Walls should be smooth, dust-free and dry before applying the paste, to avoid creasing. If the surface is not perfect we recommend the use of a lining paper. **CHECK THE WALLPAPER** before cutting the rolls ensure that they are all from the same batch and that they are in good condition with no color variation or other defects. For each claim please indicate the batch number. After hanging 3 drops check the result. No claim is accepted for more than 3 drops.

## APPLICATION

This product is hung by applying an even coating of paste either on to the wall. Avoid squeezing the paste between the edges of the paper.

**THE PASTE MUST NOT COME INTO CONTACT WITH THE SURFACE OF THE PAPER AT ANY TIME. ALL TRACES OF PASTE MUST BE REMOVED BEFORE LIGHTLY DABBING THE SURFACE WITH A MOIST, CLEAN SPONGE.**

If paste is allowed to dry on the surface of the paper it will cause discoloration. We do not accept any claim for damage resulting from paste being applied to the surface.

Use a ready-mixed wallpaper paste such as methylan viola in accordance with the manufacturer's instructions. After having pasted half of one length of the paper, fold it back on itself and continue to paste the rest of the length in the same way.

**THE SOAKING TIME SHOULD BE IN THE REGION OF 10-15 MINUTES, DURING WHICH THE PAPER WILL HAVE ABSORBED SUFFICIENT MOISTURE FOR HANGING.**

Apply the first drop in a perfectly vertical way. A better way to adhere the edges would be to paste a strip of the wall in line with the joins of the paper. Hang the lengths, one next to the other, neatly joined together, without any overlapping, taking care to match the pattern repeat.

To eliminate bubbles, and to ensure a perfect contact with the wall surface, use a decorator's wallpaper smoother or a dry cloth. Trim using a sharp blade and a metal ruler. If using scissors, trace the line to cut with a pencil and a ruler.